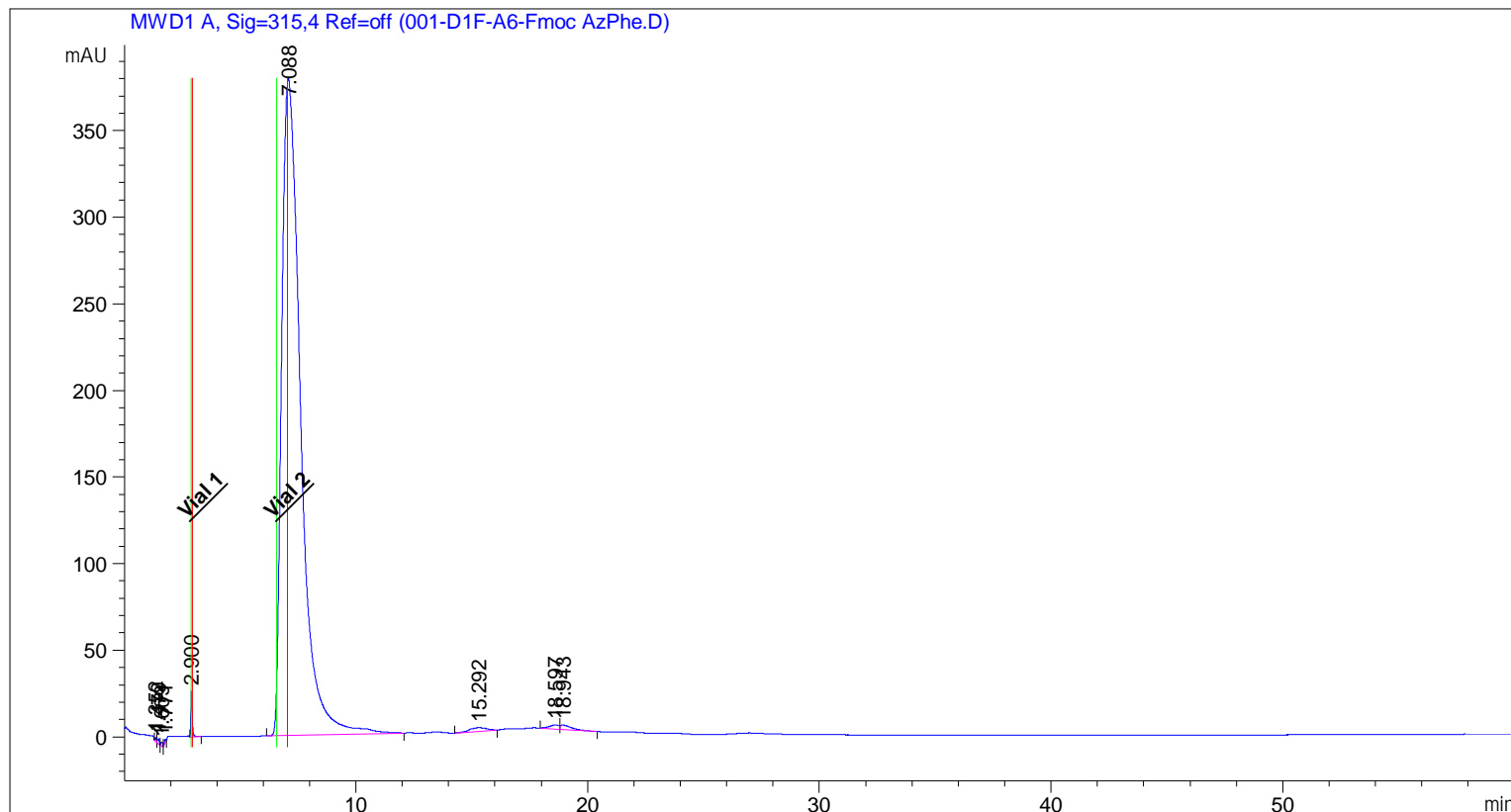


Sample Name: Fmoc AzPhe

```

=====
Acq. Operator   : SYSTEM                               Seq. Line :    1
Acq. Instrument : HPLC                               Location  : D1F-A6
Injection Date  : 31/05/2018 12:49:30                Inj       :    1
                                                    Inj Volume: 100.000 µl

Sequence File   : C:\Chem32\1\Data\New 2018-05-31 12-47-28\New.S
Method          : C:\Chem32\1\Data\New 2018-05-31 12-47-28\BG_AZF_SLOWGRAD.M (Sequence Method)
Last changed    : 31/05/2018 12:47:29 by SYSTEM
Sample Info     : Fmoc AzPhe
    
```



Fraction Information

```

=====
Fraction collection peak controlled
Maximum peak duration 0.5 min.
Fractions are collected, when at least one peak detector detects a peak
    
```

Frac #	Well #	Location	Volume [µl]	BeginTime [min]	EndTime [min]	Reason	Mass
1	1	Vial 1	43.44	2.8994	2.9563	MWD1	
2	1	Vial 2	246.77	6.5860	7.0496	MWD1	

=====
Area Percent Report
=====

Sorted By : Signal
Multiplier : 1.0000
Dilution : 1.0000
Use Multiplier & Dilution Factor with ISTDs

Signal 1: MWD1 A, Sig=315,4 Ref=off

Peak #	RetTime [min]	Type	Width [min]	Area [mAU*s]	Height [mAU]	Area %
1	1.352	BV	0.0730	9.00569	1.91039	0.0411
2	1.479	VB	0.0683	12.90692	2.87776	0.0588
3	1.609	BB	0.0927	12.47155	2.32177	0.0569
4	1.771	BB	0.0777	9.01603	1.88781	0.0411
5	2.900	BB	0.0626	109.35512	26.23694	0.4986
6	7.088	BB	0.8994	2.15232e4	379.66885	98.1324
7	15.292	BB	0.6176	106.11829	2.12852	0.4838
8	18.597	BV	0.3716	65.41046	2.27423	0.2982
9	18.943	VB	0.4591	85.32825	2.46934	0.3890

Totals : 2.19328e4 421.77563

=====
*** End of Report ***